

Maison Seraphine

Region: Languedoc | Cruzy

Sleeps: 10 **Bedrooms:** 5 **Bathrooms:** 3



Overview

Enjoy the peace and quiet of the South of France. Nestled away within wine country between the medieval and historic city of Carcassonne, the Mediterranean and the Spanish border... Set in idyllic, romantic surroundings, this charming farmhouse is the perfect getaway for those looking for some fresh air and open space. Located in the heart of the Languedoc region we welcome you to sit back and relax in the beautiful countryside surroundings. 5 bedrooms / 3 bathrooms. Sleeps up to 10 people (9 adults max). Large private pool, tennis court and garden. Bikes available on site for rental. FLEXIBLE CHANGEOVERS

Description

The farmhouse was built in the mid 1800's to house workers for the vineyards around the Chateau de Sériège. It has been beautifully restored into a spacious, family friendly house to sleep up to 10 people (9 adults maximum).

It sits in a beautiful environment on more than 2 Ha of wooded and flowered land. Perfect for families and friends, it is a beautiful and tranquil setting for your holiday with a large swimming pool, tennis court, trampoline and bikes for hire.

Enter through an electric gate and park in the spacious parking area.

The house measures 200m². On the ground floor you will find a fully equipped farmhouse style kitchen with oven, 5-burner gas stove, dishwasher, microwave, coffee machine, toaster and all the utensils you could need. There is a large dining table in the kitchen if the weather does not allow alfresco dining. On the same floor is the living room looking out onto the garden. Cosy, informal and stylish. Laundry room with a fridge / freezer with a washing machine.

Upstairs, 5 comfortable bedrooms.

- First double bedroom (15 m²) with ensuite bathroom
- Second double bedroom (13 m²) with ensuite bathroom
- Third double bedroom (13 m²)
- Bedroom has two single beds(10 m²)
- The children's room 8 m² with a single bed which can fold out to be a double
- Family bathroom with shower

Outside Area

Take the short walk across the garden (100 meters) to the 12m x 6m private swimming pool which is 1.2m deep at the shallow end and 2.8m at the deep end. Pool towels are provided.

Around the pool is a lovely terrace with comfortable seating in a 80 sqm covered pool house to provide shade all day.

There is a gas BBQ at your disposal.

Additional outhouse with a fridge, oven/hob, BBQ and toilet.

Picnic benches are provided in the covered pool house and garden lounge furniture.

There is a 4m trampoline located next to the pool.

Private tennis court.

Maison Seraphine

Region: Languedoc | Cruzy

Sleeps: 10 **Bedrooms:** 5 **Bathrooms:** 3

Plenty of parking for several cars.

Many domestic animals share the garden, 2 dogs, cats , donkeys and many chickens

There are several options for dining, there are 2 indoor dining tables in the kitchen and in the living room and for alfresco dining you can either enjoy your meals at the covered pool house or under the paper mulberry tree next to the house providing natural shade.

Maison Seraphine

Region: Languedoc | Cruzy

Sleeps: 10 **Bedrooms:** 5 **Bathrooms:** 3

Layout

The house measures 200m².

Ground floor:

Large lounge with wood stove.

Spacious kitchen well equipped with oven, 5-burner gas stove, dishwasher, microwave, coffee machine, toaster and all the utensils you could need, plus a large dining table.

Laundry room with fridge / freezer and a washing machine.

Living room/salon with lots of comfortable sofa seating.

Working fireplace and baby grand piano.

Guest WC.

Upstairs, 5 comfortable bedrooms, each uniquely decorated with many of the paintings displayed available for purchase.

- Blue double bedroom (15 m²) with Queen bed

- Sage green double bedroom (13 m²) with Queen bed and en suite bathroom.

- Yellow double Master bedroom (13 m²) with Queen bed and ensuite bathroom with shower

- Dusky pink Twin room with two single beds(10 m²)

- The children's room 8 m² with a single bed which can open out to be a double

Family bathroom with shower.

Private garden (1.5 hectares for guests use)

Private pool of 12m x 6m and 1.2m deep at the shallow end and 2.8m at the deep end. (Please note that pool area is 80m from the house but food/drink etc can be transported in a little pushwagon).

Summer kitchen with sink/bar area. WC at pool area. Gas barbecue.

Tennis court

More Info

This house is for animal lovers as the owners have many onsite animals, dogs, cats, chickens and donkeys. Whilst the animals are not in the rental house they do share the outside space.

Private garden (1.5 hectares for guests' use)

Private pool of 12m x 6m and 1.2m deep at the shallow end and 2.8m at the deep end. Chlorine. Not heatable.

Tennis court full-size.

4m Trampoline

2 x outdoor dining areas

NB: Not suitable for people with reduced mobility.

2 x cots + 2 x highchairs available

Pets not accepted.

Fans are provided. Air-conditioning is planned for 2026.

Catering can be offered - please check dates with the owners.

There are 2 highchairs and 2 cots.

Bikes on site to rent - 8 adults' bikes and 4 childrens' bikes (for over 8 year olds). 20€ per bike per day, payable on site.

There is no television at the house.

Features

- Featured
- Private pool
- Private parking
- Secure parking
- Family friendly
- Barbecue
- Terrace
- No pets allowed
- Spacious garden
- Tennis court

Maison Seraphine

Region: Languedoc | Cruzy

Sleeps: 10 **Bedrooms:** 5 **Bathrooms:** 3

4m Trampoline

2 outdoor dining areas

Many domestic animals share the garden, 2 dogs, cats,
donkeys and many chickens

Maison Seraphine

Region: Languedoc | Cruzy

Sleeps: 10 **Bedrooms:** 5 **Bathrooms:** 3

Location

The house is in a peaceful environment, surrounded by vineyards with the castle of Seriege as a neighbor and vast woods perfect for strolling and exploring.

There are many nearby villages such as Cruzy (4 minutes drive), Quarante (4 minutes drive) and Capeatang (8 minutes drive) where you can buy fresh bread every day. Capeatang has a market on the square every Wednesday and Sunday and several good restaurants. It is just 2 km from the UNESCO site Canal Du Midi.

The house is only 30 km from the nearest beach, Gruissan Plage, which offers water sports, many activities and restaurants in abundance. But why not make your choice among the many seaside towns within an hour's drive like Valras, Agde or even Sete.

Moving inland, you can experience many other gems of the area. Pézenas (40 minute drive) is fantastic for craft shopping, pottery and antique shops and has an outstanding Saturday market.

Visit Béziers (30 minute drive), one of the oldest cities in France founded in 575 BC and the birth place of Pierre Paul Riquet, the engineer who created the Canal du Midi.

Roquebrun should be on your list of outings, known locally as Nice d'Hérault and the most visited for its Mediterranean garden and kayaking on the Orb river.

Minerve also has a beautiful day and was selected as one of the Most Beautiful Villages in France (in addition there is a great restaurant).

Nearest restaurants:

Argèliers 'Le Chat Qui Peche'

Quarante 'Le Terminus'

Ouveillan Thai takeaway

Montouliers

Capeatang

Le Somain

Boulangeries:

Quarante



Maison Seraphine

Region: Languedoc | Cruzy

Sleeps: 10 **Bedrooms:** 5 **Bathrooms:** 3

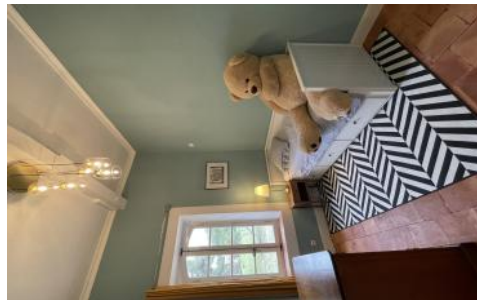
Argeliers

Maison Seraphine

Region: Languedoc | Cruzy

Sleeps: 10 Bedrooms: 5 Bathrooms: 3

Photos



Maison Seraphine

Region: Languedoc | Cruzy

Sleeps: 10 **Bedrooms:** 5 **Bathrooms:** 3

