

# Manoir Ciel de Provence

**Region:** Provence

**Sleeps:** 15 **Bedrooms:** 8 **Bathrooms:** 8

---



## Overview

Bordering extensive vineyards and farmland, near Pont du Gard, one of Provence's most iconic landmarks, this imposing country manor has been brought up-to-date with all modern comforts including a heatable pool and outdoor Jacuzzi, to welcome its guests in an enchanting setting. Sunday arrival day in high season.

## Description

Pont du Gard: An impressive country manor equipped for luxury holidays and special events, featuring a heatable pool and Jacuzzi, in Provence's most attractive area.

Dating back to the late 18th century, this impeccably restored country property sits in large, landscaped grounds with numerous areas to entertain and unwind surrounded by the sweeping landscape of Southern France. Complete with air conditioning and pool heating, indoor and outdoor living and dining areas, this villa is perfect for large family celebrations, events and weddings. Additional guests (up to maximum of 22 in total) can be added on request. Luxurious accommodation is provided in 7 en suite bedrooms and an additional en suite dormitory, recommended for children. Provence's main places of interest, historical sites, lively weekly markets, are located within easy reach of this manor including the 2,000 year old Roman aqueduct of Pont du Gard, Nimes, Arles and Avignon.

# Manoir Ciel de Provence

**Region:** Provence

**Sleeps:** 15 **Bedrooms:** 8 **Bathrooms:** 8

---

## Layout

ACCOMMODATION  
(800m)

### Ground floor:

Entrance hall.

Small living room, arched ceiling, fireplace, TV, DVD, hi-fi and French doors to the rose garden.

Large living room, sofa, armchairs, pool table, fireplace, French door to terrace.

Dining room, table, chairs, an imposing fireplace.

Fully equipped kitchen/ dining area, French doors to terrace.

Laundry room, 2 washing machines, a dryer.

Bedroom 1: Master bedroom suite, king size bed (180cm), living area, double sofa bed (140cm), en suite bathroom, private shower room, WC, French door to garden.

### First floor:

Bedroom 2: king size bed (180cm), en suite bathroom, WC.

Bedroom 3: king size bed (180cm), en suite bathroom, WC.

Bedroom 4: king size bed/ 2 twin beds (180cm/ 2 x 90cm), en suite bathroom, WC.

Bedroom 5: king size bed (180cm), en suite bathroom, WC.

Bedroom 6: King size bed (180cm), en suite bathroom, shower, WC.

### Second floor:

Bedroom 7: king size bed/ 2 twin beds (180cm/ 2 x 90cm), en suite bathroom, WC, door through to Bedroom 8.

Bedroom 8: dormitory with 6 single beds, en suite bathroom, WC.

### Grounds:

Beautifully landscaped grounds, manicured gardens, lawn areas, century old oak and pine trees and lavender bushes. Terrace with view over rosebushes and fountain.

## More Info

## Features

- Aircon
- Internet
- Private pool
- Heatable pool
- Secure fenced pool

# Manoir Ciel de Provence

**Region:** Provence

**Sleeps:** 15 **Bedrooms:** 8 **Bathrooms:** 8

---

Covered terrace under the arches, outdoor living furniture. Private heated 18m x 5m pool (depth: 1.1m - 2.6m; Roman steps, security system: hard cover), sunbathing area, outdoor shower, raised wall and gate access to the pool. Jacuzzi. Pool house with well-equipped summer kitchen, barbecue, separate grill, dishwasher and gas hob. Swings. Boules pitch. Lilos and inflatable chairs. Unfenced fountain in the garden, near the terrace (depth: 50cm). Parking for five cars plus car port for one vehicle.

Please note: at the end of June for harvest and during the month of September, the vendange or grape harvest takes place in the surrounding vineyards and occasionally activity can be heard from the pool side and garden.

# Manoir Ciel de Provence

**Region:** Provence

**Sleeps:** 15 **Bedrooms:** 8 **Bathrooms:** 8

## Location

### DISTANCES

Nearest beach: 84 km.

Nîmes: 40 km.

Avignon 55 km.

Marseille 136 km.

TGV railway stations in Nîmes and Avignon.

Montaren (shops, bakery, supermarket, organic greengrocer, restaurant and pizza takeaway): 800 metres.

Uzes (more shops and restaurants): 3.5 km.

Golf: Uzes 5 km, or Nîmes 25 km.

Tennis: Uzes 5 km.

Horse-riding: 1.5 km.

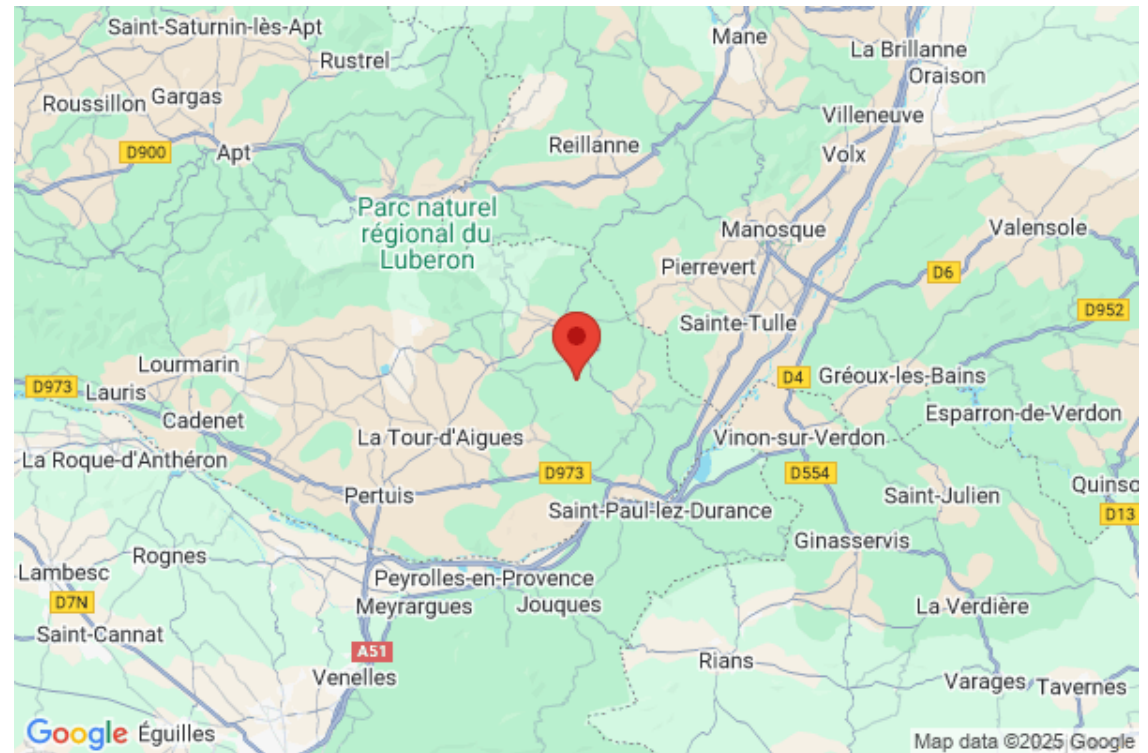
Water park: La Bouscarasse in Serviers 2 km.

Hot air ballooning: Uzes 3.5 km.

Pont du Gard: 17 km.

Nîmes: 28 km.

Orange: 55 km.





# Manoir Ciel de Provence

Region: Provence

Sleeps: 15 Bedrooms: 8 Bathrooms: 8

## Photos

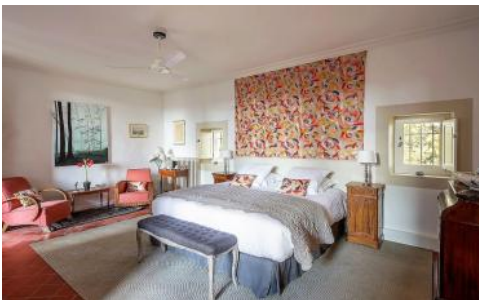




# Manoir Ciel de Provence

Region: Provence

Sleeps: 15 Bedrooms: 8 Bathrooms: 8





# Manoir Ciel de Provence

Region: Provence

Sleeps: 15 Bedrooms: 8 Bathrooms: 8



# Manoir Ciel de Provence

**Region:** Provence

**Sleeps:** 15 **Bedrooms:** 8 **Bathrooms:** 8

---

