

Chateau des Pre-Alpes Azur

Region: Cote d'Azur | La Penne

Sleeps: 29 **Bedrooms:** 17



Overview

Situated in the heart of the Préalpes d'Azur natural park, this property extends over a private domain of 9 hectares and yet is only a one-hour drive away from Nice. 18th century mansion with magnificent views has 17 rooms, each with its own bathroom, several flexible work and event spaces, a 30 m2 professional kitchen (in addition to the common kitchen on the first floor), a swimming pool, a restaurant and bar service.

Description

Perched at an altitude of 750 meters, in the heart of the Préalpes d'Azur natural park, this magnificent property extends over a private domain of 9 hectares, just over 1 hour from Nice by car and 15 minutes from the little village of La Penne. This place of inspiration, entirely renovated in 2021, was conceived around nature as a place of creativity, resourcing and learning, whilst combining comfort and modernity. This 18th century mansion with its breathtaking view of nature has 17 bedrooms, several flexible work and event spaces, a professional kitchen of 30m2 (in addition to the common kitchen on the first floor), a heated outdoor pool... The vast interior spaces as well as the 2 terraces of 100 and 400m2 allow for numerous activities, such as sports classes, yoga or meditation sessions, outdoor games, permaculture workshops and other manual work.

A permaculture farm-school is located next to the domain, supplying it with organic, fresh and ultra-local products.

ACTIVITIES

On site: permaculture farm school, biodiversity training workshops (manual work, gardening, cooking...), electric bikes available, petanque court, games for children (ping-pong, games...). On demand, yoga classes, meditation sessions.

In the immediate vicinity: hiking circuits, fitness trails in the massifs of the regional park of the Préalpes.

Chateau des Pre-Alpes Azur

Region: Cote d'Azur | La Penne

Sleeps: 29 **Bedrooms:** 17

Layout

BEDROOMS (17 bedrooms - 27 beds - 29 guests)

Ground floor:

Bedroom 1 (wheelchair accessible): 25m², king size bed twinable (180cm), en-suite bathroom (shower, bathtub), park view

1st floor:

Bedroom 9: 17m², king size bed twinable (180cm), en-suite bathroom (shower), garden view

Bedroom 10: 16m², 2 single beds (90cm), en-suite bathroom (shower), mountain view

Bedroom 11: 13m², double bed (140cm), en-suite bathroom (shower), countryside view

Bedroom 12: 14m², queen size bed (160cm), en-suite bathroom (shower), mountain view

Bedroom 14: 14m², queen size bed (160cm), en-suite bathroom (shower), countryside view

Bedroom 15: 17m², king size bed twinable (180cm), en-suite bathroom (shower), countryside view

Bedroom 16: 19m², king size bed twinable (180cm), en-suite bathroom (bathtub), mountain view

Bedroom 17: 18m², queen size bed (160cm), en-suite bathroom (shower), mountain view

2nd floor:

Bedroom 20: 16m², 2 single beds (90cm), en-suite bathroom (shower), mountain view

Bedroom 21: 13m², queen size bed (160cm), en-suite bathroom (shower), countryside view

Bedroom 22: 14m², queen size bed (160cm), en-suite bathroom (shower), mountain view

Bedroom 24: 15m², queen size bed (160cm), en-suite bathroom (shower), countryside view

Bedroom 25: 17m², king size bed twinable (180cm), en-suite bathroom (shower), garden view

More Info

Full-board catering available on request.

Babysitting available on request.

Heated swimming pool.

Seminars, events etc welcome.

OUTDOOR FEATURES

- Heated outdoor pool (12m)

- 2 terraces of 100 and 400m²

- Creation of a permaculture farm

- Electric bikes

Features

- Internet
- Un-overlooked pool
- Private pool
- Heatable pool
- Heating
- Private parking
- Secure parking
- Family friendly
- Barbecue
- Terrace
- Games Room
- Fireplace
- Spacious garden
- Event Venue

Chateau des Pre-Alpes Azur

Region: Cote d'Azur | La Penne

Sleeps: 29 **Bedrooms:** 17

Bedroom 26: 20m², king size bed twinable (180cm), en-suite bathroom (shower), garden view

Bedroom 27: 19m², king size bed twinable (180cm), en-suite bathroom (shower), mountain view

Bedroom 29: 17m², king size bed twinable (180cm), en-suite bathroom (shower), garden view

INDOOR FEATURES

- Wi-Fi
- Living room of 75m² open on a south facing terrace, fireplace, table (10 ppl)
- Dining room of 15m² with table (6/8 ppl)
- Equipped kitchen 30m²

- Large reception room of 250m² dividable into 2 rooms of 170 and 80m²
- Arched room of 70m² with sound system
- Professional kitchen of 30m²
- Yoga room

Chateau des Pre-Alpes Azur

Region: Cote d'Azur | La Penne

Sleeps: 29 **Bedrooms:** 17

Location

Puget - Théniers train station (15mins)

Airport:

Nice Côte d'Azur (NCE) 70km - 1hour

Trains:

Gare de Puget-Théniers 15km - 20 mins

By Car:

Nice: 75km - 1hr20

Cannes: 95km - 1hr30

Monaco: 90km - 1hr30



Chateau des Pre-Alpes Azur

Region: Cote d'Azur | La Penne

Sleeps: 29 Bedrooms: 17

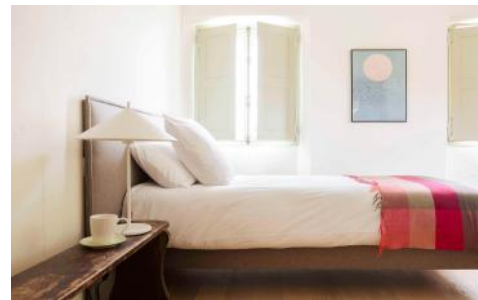
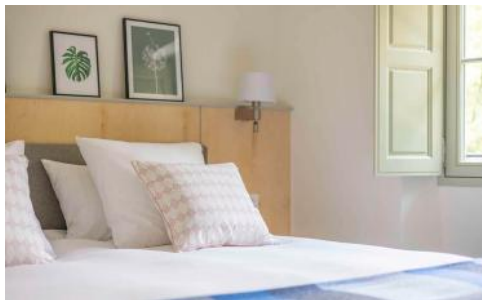
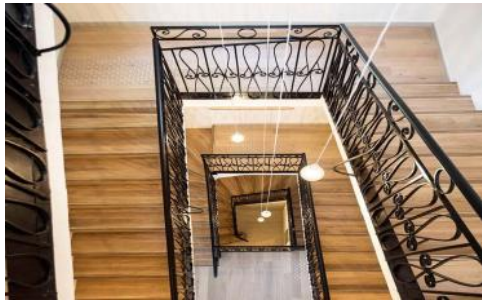
Photos



Chateau des Pre-Alpes Azur

Region: Cote d'Azur | La Penne

Sleeps: 29 Bedrooms: 17



Chateau des Pre-Alpes Azur

Region: Cote d'Azur | La Penne

Sleeps: 29 Bedrooms: 17

