

La Bastide Neuve

Region: Provence

Sleeps: 10 **Bedrooms:** 5



Overview

La Bastide Neuve is newly built and located in the countryside, just outside the pretty market town of St Remy de Provence. It's only a 15 min walk to the centre of the village and a 3 min drive.

The property enjoys marvellous views of Les Alpilles and has a large garden including a private pool, an olive grove, and of course a summer kitchen to enjoy refreshments in the hot summer.

The interiors have been thoughtfully decorated with style, and feature some art work. Air conditioning throughout, 5 bedrooms ALL with en-suite bathrooms.

This Bastide is perfect for a quiet and relaxing holiday with family or a group of friends.

Description

This is an eye-catching newly built bastide of 270m², located in the countryside on the outskirts of the pretty market town of St Remy-de-Provence, the centre of which is either a 3-minute drive or a 15-minute walk.

The property enjoys views of Les Alpilles and has a garden of 3,000m² which includes an olive grove, an alarmed and heated swimming pool of 13 x 4.5m, with a depth of between 1.1m at both ends and 1.9m in the middle, next to which is the summer kitchen, which also houses the well-equipped gym of 45m² and a shower room.

The interiors which have been decorated and furnished with style and charm are spacious, welcoming and feature some interesting works of art. There is a large living room, a separate dining room, a well-equipped kitchen with an outdoor shaded dining terrace, a guest WC and five bedrooms all of which have en-suite bathrooms

La Bastide Neuve

Region: Provence

Sleeps: 10 **Bedrooms:** 5

Layout

Bedrooms/bathrooms

Bedroom 1. Master bedroom with 180cm bed and en-suite bathroom with bath, shower, basin and WC.

Bedroom 2. Double bedroom with 160cm bed and en-suite bathroom with shower, basin and WC.

Bedroom 3. Double bedroom with 160cm bed and en-suite bathroom with shower, basin and WC.

Bedroom 4. Double bedroom with 160cm bed and en-suite bathroom with shower, basin and WC.

Bedroom 5. Twin bedded room with 2 x 90cm beds, which can be joined and en-suite bathroom with shower, basin and WC.

Features a large living room, a separate dining room, a well-equipped kitchen with an outdoor shaded dining terrace, and guest WC.

More Info

The large garden is 3,000m² with an olive grove, an alarmed and heated swimming pool of 13 x 4.5m, and a depth of between 1.1m at both ends and 1.9m in the middle, next to which is the summer kitchen, which also houses the well-equipped gym of 45m² and a shower room.

Features

- Aircon
- Internet
- Satellite TV
- Easy walk to shops (<15 mins)
- Un-overlooked pool
- Private pool
- Heatable pool
- Private parking
- Golf nearby
- Secure parking
- Family friendly
- Barbecue
- Terrace
- Fireplace
- Spacious garden

La Bastide Neuve

Region: Provence

Sleeps: 10 **Bedrooms:** 5

Location

Les Alpilles are a small rocky range of hills in Provence, which stretch from the Rhone to the Durance rivers. The peaks of which are an imposing mix of bare limestone and scrub or garrigue, whilst the lower slopes and surrounding countryside are rich in olive groves, vineyards, cypress, pine, almond trees and sunflowers.

Above all else, what is particularly striking is the magical quality and luminescence of the light, which has been the inspiration of a host of painters, the most famous of which, being Vincent Van Gogh.

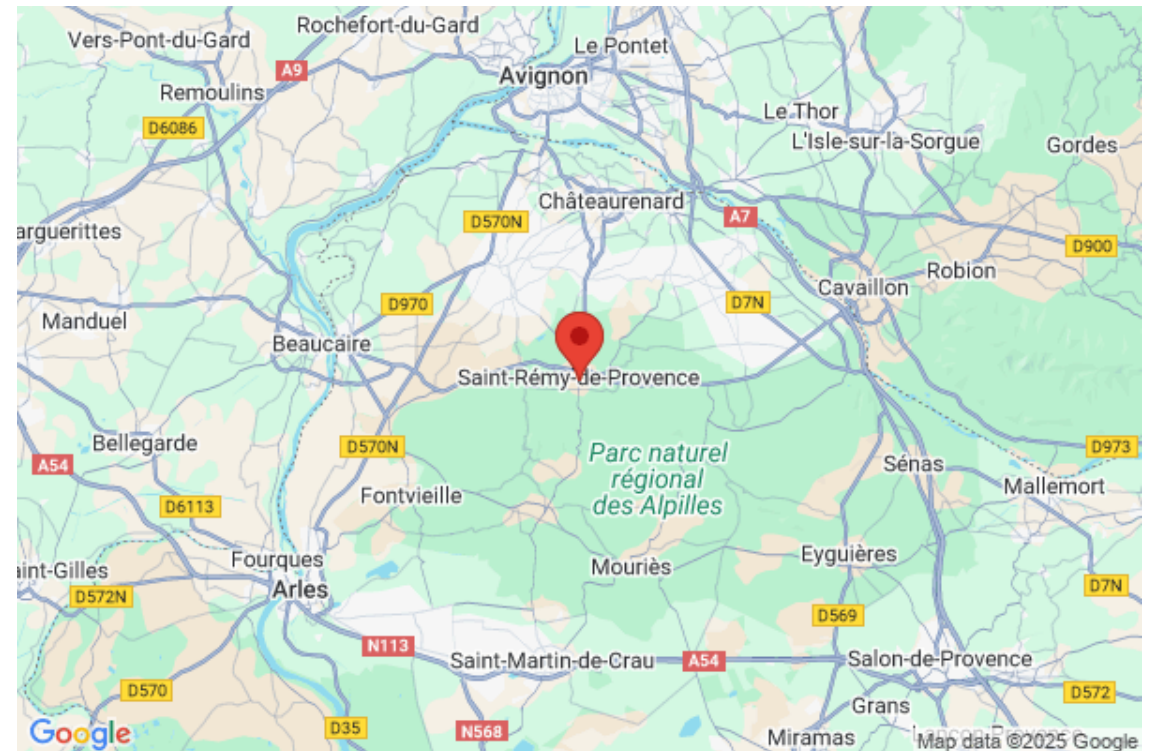
The region boasts some of Provence`s most famous tourist sites, such as the Roman ruins of Glanum, the medieval hilltop village of Les Baux-de-Provence and the stylish little town of Saint-Remy-de-Provence, which was the birthplace and home of Nostradamus.

Several pretty and typical Provencal villages encircle Les Alpilles; Maussane, Mouries, Fontvieille, Eygalières, Le Paradou and Maillane. With stone built houses, clustered around Romanesque churches, open squares shaded by plane trees, fountains, charming cafes, restaurants and weekly markets -all have their own distinct character and charm.

Whilst further afield and yet all within easy striking distance, are, the papal walled town of Avignon, the Roman town of Arles, the spectacular Camargue, vibrant Aix-en-Provence and France`s second city the port of Marseille.

Closest beaches: Saintes Maries de la Mer, 66 kms. Piémenson-Plage d'Arles, 77 km. Cassis, 121 kms.

Closest golf: Domaine de Manville, 12.9 kms. Golf de Servannes, 17.2 kms



La Bastide Neuve

Region: Provence

Sleeps: 10 Bedrooms: 5

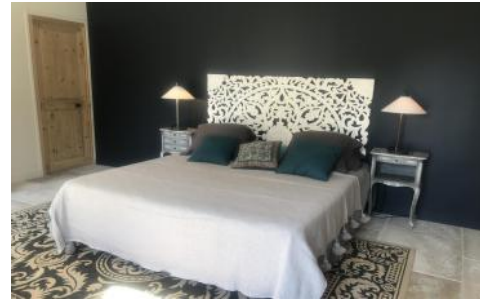
Photos



La Bastide Neuve

Region: Provence

Sleeps: 10 Bedrooms: 5



La Bastide Neuve

Region: Provence

Sleeps: 10 Bedrooms: 5

