

# Villa Svetlana

**Region:** Cote d'Azur

**Sleeps:** 8 **Bedrooms:** 4 **Bathrooms:** 4

---



## Description

Villefranche-sur-Mer: This is a superb family villa with heatable infinity pool, affording breathtaking sea views, within walking distance from shops, restaurants and the sandy beach.

This contemporary design property is located just 15 minutes from Nice and Monaco, 25 minutes from Cannes and 40 minutes from the Italian border. It is situated in a central location from which to visit some of the most exquisite perched villages in all of France. Arranged over 3 levels starting from the top floor, the accommodation comprises 4 luxury ensuite bedrooms, bright and spacious living areas with a striking sea view and a splendid heatable infinity pool.

## Overview

Perched on a hillside overlooking the shimmering Mediterranean sea, the bay of Villefranche and Cap Ferrat, this exquisite, luxury family villa is a jewel of contemporary design and state-of-the art facilities, within walking distance from the beach, shop and restaurants. Minimum stay 2 weeks in high season.

# Villa Svetlana

**Region:** Cote d'Azur

**Sleeps:** 8 **Bedrooms:** 4 **Bathrooms:** 4

---

## Layout

### ACCOMMODATION

**Second Floor** (entrance at road level):

Living/ dining area, TV, large sliding doors to terrace, sea view.

Fully equipped modern open plan kitchen.

Double/ twin bedroom, TV, sliding door to patio, shower room, en suite WC.

Double bedroom, TV, sliding door to terrace, sea view, en suite shower room, separate WC.

### First Floor:

Double/ twin bedroom, large sliding door to pool area, sea view, shower room, en suite WC.

Master double bedroom, TV, sliding door to terrace and pool area, en suite shower room, separate WC.

### Ground Floor:

Large TV room, TV/ DVD/ music centre, window showing bottom of the pool.

### Grounds:

Terraced garden mature trees and small synthetic lawn, panoramic sea views Top floor terrace with parking space for 4 cars. 2 large garages under the house. Covered terrace, outdoor dining facilities, portable gas BBQ.

Asymmetrical 6m x 4m heated infinity pool (depth: 1m-1.80m) protected by glass panels, outdoor shower. Sand seating area/ boules pitch on ground level.

## More Info

### Grounds:

Terraced garden mature trees and small synthetic lawn, panoramic sea views Top floor terrace with parking space for 4 cars. 2 large garages under the house. Covered terrace, outdoor dining facilities, portable gas BBQ. Asymmetrical 6m x 4m heated infinity pool (depth: 1m-1.80m) protected by glass panels, outdoor shower. Table tennis. Sand seating area/ boules pitch on ground level.

### FACILITIES

Air Conditioning

Beach within 10 minute walk

Chef service available

Family villa

Gated Pool

Heatable Pool

Infinity Pool

Near shops/restaurants

Near the airport

Near the beach

Table tennis

With seaviews

With WIFI

## Features

- Aircon
- Internet
- Table tennis
- Easy walk to beach (<15 mins)
- Easy walk to shops (<15 mins)
- Private pool
- Heatable pool
- Secure fenced pool
- Private parking
- Watersports nearby
- Secure parking
- Family friendly
- Barbecue
- Terrace
- Sea view

# Villa Svetlana

**Region:** Cote d'Azur

**Sleeps:** 8 **Bedrooms:** 4 **Bathrooms:** 4

## Location

### DISTANCES

Nearest sandy beach: walking distance.

Shops/ restaurants: Villefranche-sur-Mer

Nice airport: 9 km.

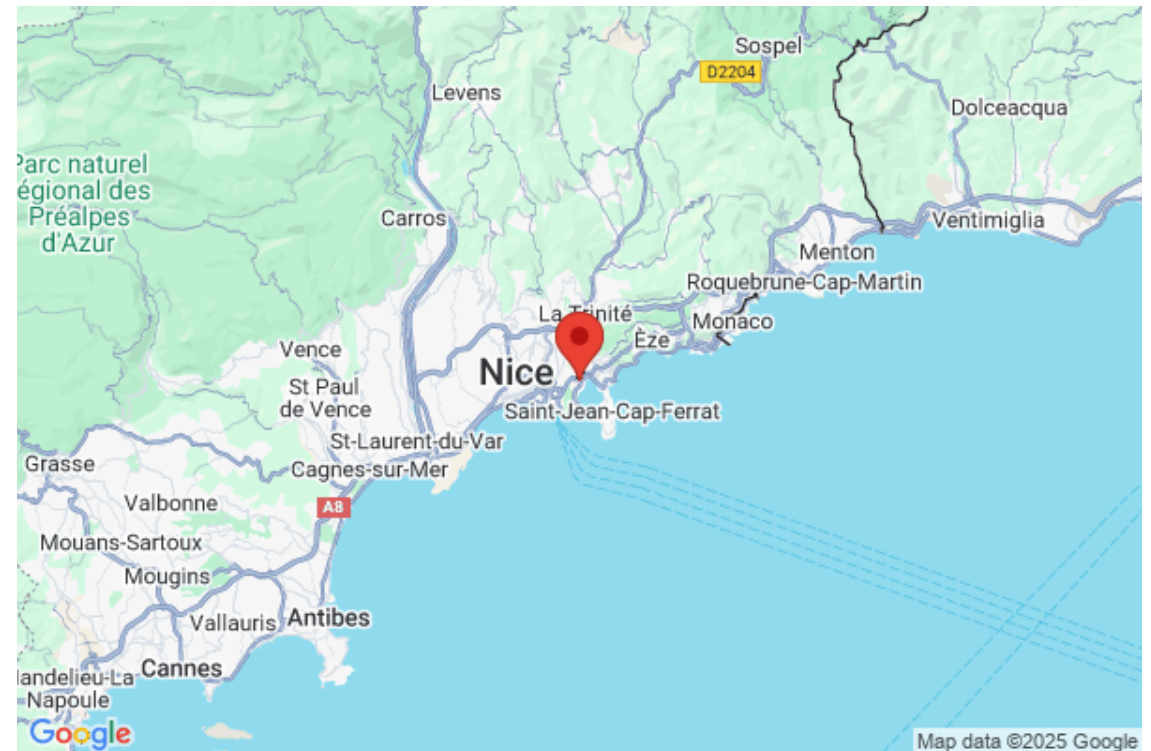
Monte Carlo: 16 km.

Menton: 30 km.

Antibes: 30 km.

Cannes: 40 km.

Italy's border: 30 km.



# Villa Svetlana

**Region:** Cote d'Azur

**Sleeps:** 8 **Bedrooms:** 4 **Bathrooms:** 4

## Photos

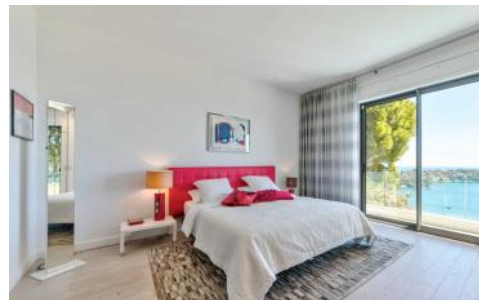
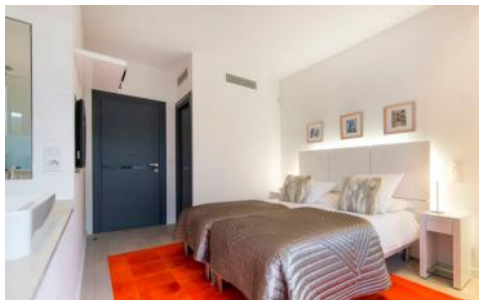
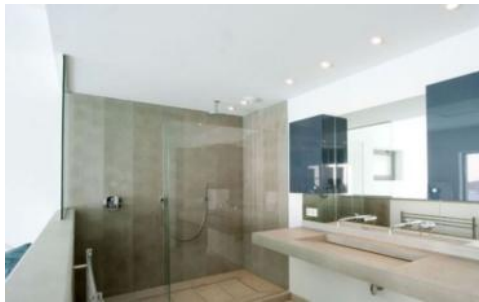




# Villa Svetlana

Region: Cote d'Azur

Sleeps: 8 Bedrooms: 4 Bathrooms: 4



# Villa Svetlana

**Region:** Cote d'Azur

**Sleeps:** 8 **Bedrooms:** 4 **Bathrooms:** 4

---





# Villa Svetlana

Region: Cote d'Azur

Sleeps: 8 Bedrooms: 4 Bathrooms: 4



# Villa Svetlana

**Region:** Cote d'Azur

**Sleeps:** 8 **Bedrooms:** 4 **Bathrooms:** 4

---

