

Bel Epoque

Region: Cote d'Azur

Sleeps: 6 **Bedrooms:** 3 **Bathrooms:** 2



Overview

Bel Epoque is a stunning art deco holiday home, located next to the famous Chapelle Matisse in the picturesque medieval town of Vence. The property is within walking distance to all amenities and has a beautiful private swimming pool surrounded by an immaculate garden. This holiday home has 3 bedrooms and can sleep up to 6 people.

Description

Bel Epoque is a charming, elegant residence dating from the 1930s, fully renovated to a high standard by a professional designer with great attention to detail. It is a generous 250m² overall so plenty of room for everyone.

This villa is located in the picturesque medieval village of Vence, just 5 minutes away from Saint Paul de Vence. Very central, and resembles not so much a private home as a private luxury hotel. Easy walk to village centre and bus station. Views over the town, the hills and the sea.

It has 3 bedrooms and 2 bathrooms:-

1 double bedroom (queen sized bed)

1 double bedroom

1 master bedroom (king sized bed)

Large, light and airy living room.

Wifi

It boasts an immaculate garden with a pool house, a terrace, a summer kitchen, a barbecue, a lovely outdoor dining area and a stunning 10m private swimming pool.

Bel Epoque

Region: Cote d'Azur

Sleeps: 6 **Bedrooms:** 3 **Bathrooms:** 2

Layout

1 double bedroom (queen sized bed) - ground floor
1 double bedroom - ground floor
1 master bedroom (king sized bed) - first floor with additional huge loft area with gym, sitting area, bath/shower, WC.

1 bathroom and separate WC on ground floor.
1 bathroom and WC on first floor.

Wifi
Private swimming pool
BBQ
Terrace
Outdoor dining
No pets allowed
Gym

More Info

Visited by our team. Highly recommended.

Wifi everywhere
No pets
Cot and baby bed available.
Summer kitchen and barbecue.
Airport transfer possible
Driver, maid and cook on request
Wifi in and out, large swimming pool , barbecue, fitness, solarium, outside kitchen, covered pool house. The property is facing south close to all amenities and local market, public transport.

Features

- Aircon
- Internet
- Easy walk to shops (<15 mins)
- Un-overlooked pool
- Pets allowed on request
- Private pool
- Private parking
- Golf nearby
- Watersports nearby
- Secure parking
- Barbecue
- Terrace
- Fireplace
- Spacious garden
- i-Rent

Bel Epoque

Region: Cote d'Azur

Sleeps: 6 **Bedrooms:** 3 **Bathrooms:** 2

Location

Just 5 minutes from Saint Paul de Vence. 15 minutes to Antibes, 35 minutes to Nice.

Nice airport is just 25 minutes drive away, 45 minutes drive to Italy. (Not to be missed on Friday – market day in Ventimiglia).

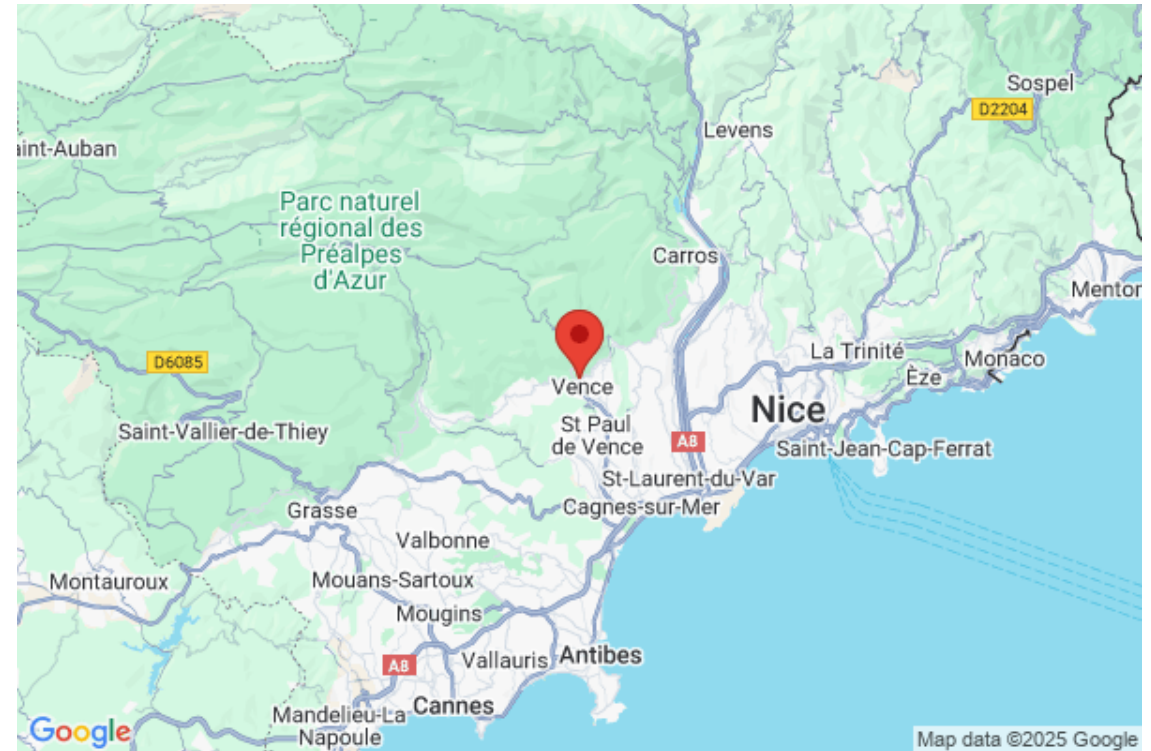
Vence has both supermarkets and small, local artisan shops.

Vence is France's town of art near the French Riviera. This might sound like a big claim in a country so soaked in art history, especially 20th-century art, but the lovely historic town on Vence in the South of France between Nice and Antibes has been a magnet for artists who left their legacy in both spirit and art.

The town has a small chapel, up above the Cité Historique Chapelle du Rosaire (1948, completed in 1951), decorated with stained glass and other fittings by Henri Matisse.

Vence is also famous for its spring water, which can be collected from numerous fountains in the town. It is a heaven for cyclist, spectacular outlook over the Cote D'Azur, with many charming villages to visit for lunch or dinner.

Vence has many superb restaurants and lovely small shops, bakeries, cafes, absolutely charming! (also several large supermarkets, just outside). Easy parking both in town and Villa.



Bel Epoque

Region: Cote d'Azur

Sleeps: 6 Bedrooms: 3 Bathrooms: 2

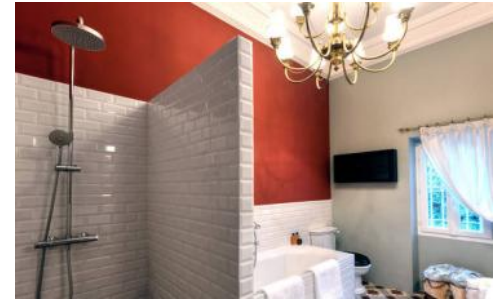
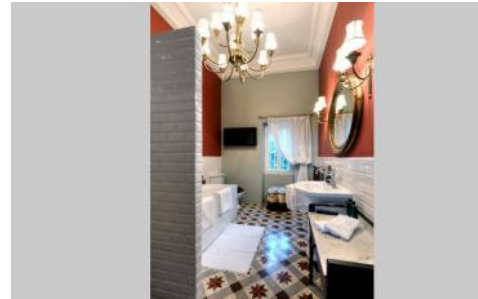
Photos



Bel Epoque

Region: Cote d'Azur

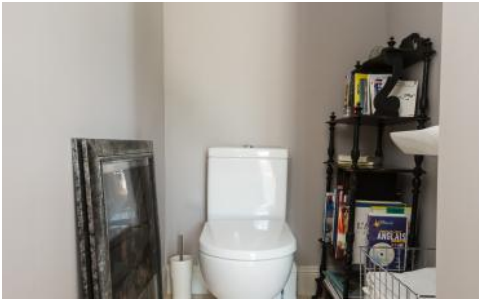
Sleeps: 6 Bedrooms: 3 Bathrooms: 2



Bel Epoque

Region: Cote d'Azur

Sleeps: 6 Bedrooms: 3 Bathrooms: 2



Bel Epoque

Region: Cote d'Azur

Sleeps: 6 **Bedrooms:** 3 **Bathrooms:** 2

