

Villa Valeria

Region: Cote d'Azur

Sleeps: 10 **Bedrooms:** 4



Overview

Charming traditional Provencal stone Villa in the heart of the Ramatuelle vineyards with wonderful views over vines and the countryside. Close to the beaches of Pampelonne. Located on land of over 1 hectare and nestled among the vineyards of L'Oumede, Ramatuelle. Only a few minutes drive to the sandy beaches of Pampelonne with all the beach clubs and restaurants. It is also only a few minutes drive to the picturesque village of Ramatuelle and a short 10 minute drive to the centre of St Tropez. Air conditioning. 4 bedrooms/4 bathrooms.

Description

Valeria is Provencal in style and totally charming with an original stone and white facade. The house is bright and has been decorated in a Modern Provencal style in a light palette of greys and whites. From most of the rooms you have the wonderful view of the very well maintained garden and pool, leading onto the Vineyards.

The lounge and dining are open-plan. This is a spacious area with a dining table, a large comfortable sofa, and features a gorgeous stone open fireplace (lovely to have in Autumn/Winter).

The kitchen is a spacious and has just had a new kitchen fitted, it is fully equipped, has Neff appliances, and a Nespresso coffee machine, it also opens onto the terrace.

The Master Bedroom is off the lounge and has a large double bed (180cm) with ensuite with shower, WC, heated towel rail, double sinks and bathtub. There are French doors leading directly out onto the terrace. There is a family bathroom with double sinks, heated towel rail and bathtub.

The third bedroom is a double bed, with French doors leading out into the garden.

On the other side of the house there are three other bedrooms. The first is a double bedroom with double bed, and a stairwell leading up to a Mezzanine floor with a single bed.

In the hallway there is a separate WC.

The second bedroom is a large double (180cm) it has a large ensuite with stone sink, WC, heated towel rail, shower, and bathtub. This bedroom also has a stairwell leading to a Mezzanine with a single bed.

The house has air conditioning and WIFI Internet.

This four bedroom Villa sits on over one hectare of land. The Villa is nestled among the vineyards of L'Oumede and is only a five minute drive to the sandy beaches of Pampelonne and only a few minutes drive from Ramatuelle Village and ten minutes to St Tropez.

The large garden is very charming and well manicured, it has olive trees, lemons, lavender, rosemarie and many other local plants and trees, there are two grassed lawns for children to enjoy.

There are many areas for sunbathing by the Pool and a large terrace for dining, outside seating with shade. There is a BBQ. The swimming pool is 12m x 6m.

There is a driveway and then plenty of parking for cars outside the house.

Villa Valeria

Region: Cote d'Azur

Sleeps: 10 **Bedrooms:** 4

The area where this Villa is located is very peaceful yet you have all amenities close by.

Villa Valeria

Region: Cote d'Azur

Sleeps: 10 **Bedrooms:** 4

Layout

4 bedrooms 2 with en suite
3 bathrooms in total
1 double with mezzanine with a single bed on the mezzanine plus en suite
1 double with mezzanine with a single bed on the mezzanine
Master bedroom with en suite
Family bathroom
Swimming Pool
Dishwasher
Outside Dining
BBQ
Wifi
Cable TV
Lawn
Landscaping
DVD Player
Fence
Parking
Covered Patio
Exterior Lighting
Range/Oven
Refrigerator
Air Conditioning
Microwave
Washer
Dryer
Terrace
Freezer
Linen / Towels provided

Style -Provencale

4 Bedrooms

3 Bathrooms

More Info

Very private and quiet due to large terrain

Large sunny terraces around the pool great entertaining areas.

Covered outdoor dining areas, Super close to main beach of Pampelone, Spa supermarket Ramatuelle

Features

- Internet
- Easy walk to beach (<15 mins)
- Easy walk to shops (<15 mins)
- Un-overlooked pool
- Private pool
- Private parking
- Golf nearby
- Watersports nearby
- Secure parking
- Family friendly
- Terrace

Villa Valeria

Region: Cote d'Azur

Sleeps: 10 **Bedrooms:** 4

Air conditioning

Laundry facilities

Alarm

WiFi

Linen Included

Villa Valeria

Region: Cote d'Azur

Sleeps: 10 **Bedrooms:** 4

Location

Nearest Beaches L'Epi plage, Pampelonne

Nearest Village Ramatuelle and Saint Tropez

Pampelonne Beach - 2 kms

Ramatuelle - 4.5 kms

St Tropez - 6 kms

Nice Airport - 109 kms

St Tropez Airport - 21 kms

A8 Motorway - 39 kms

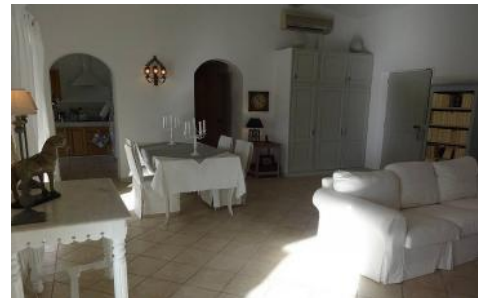


Villa Valeria

Region: Cote d'Azur

Sleeps: 10 Bedrooms: 4

Photos



Villa Valeria

Region: Cote d'Azur

Sleeps: 10 Bedrooms: 4



Villa Valeria

Region: Cote d'Azur

Sleeps: 10 **Bedrooms:** 4

